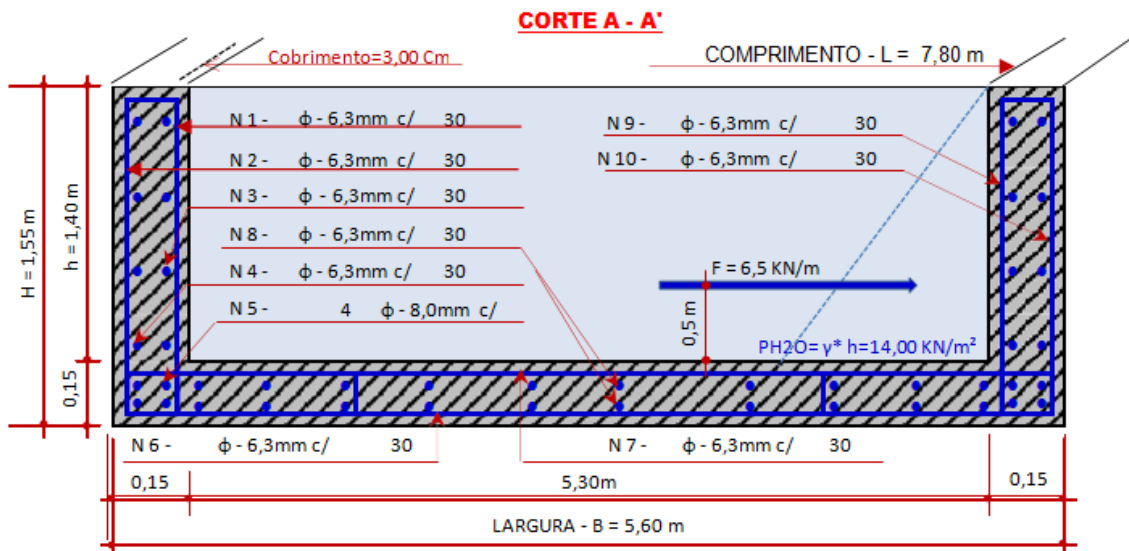
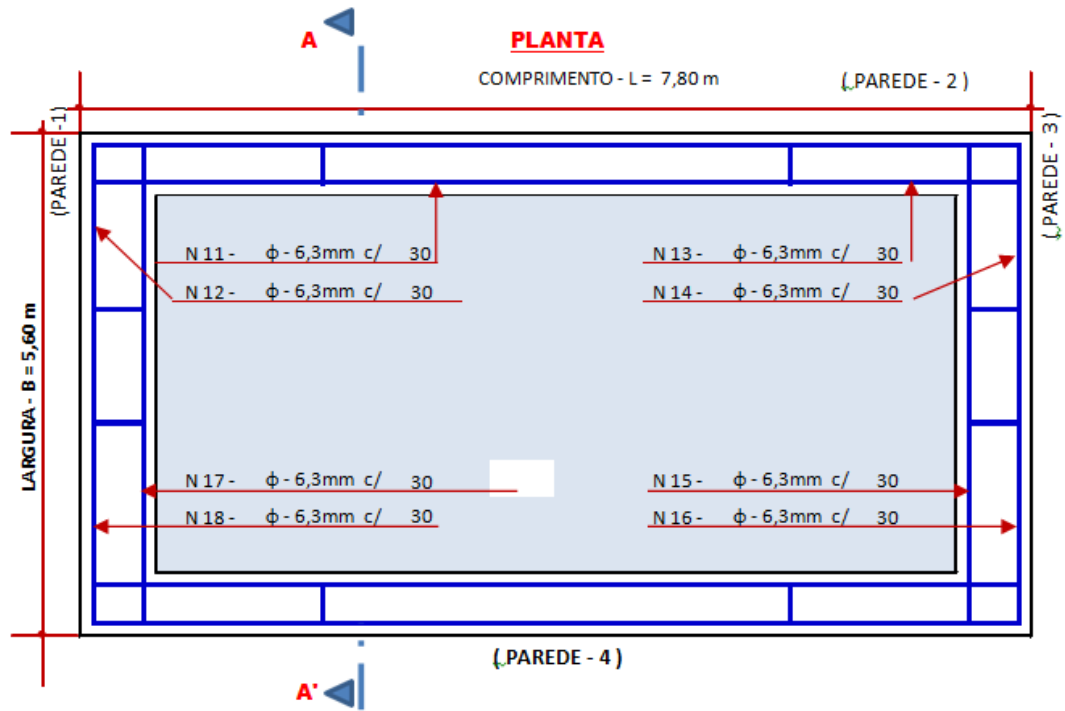
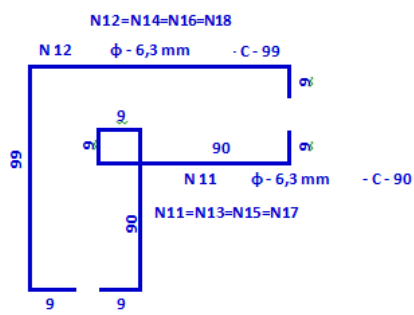
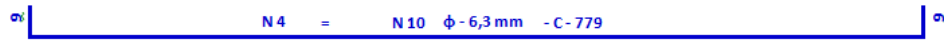
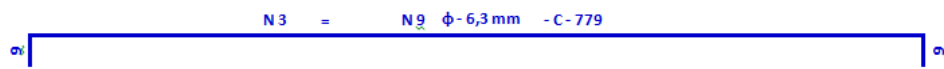
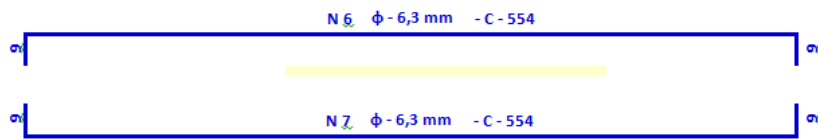
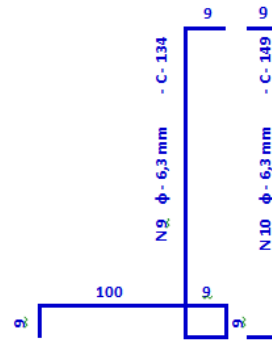
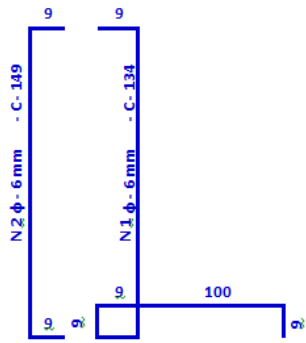


GOIOERÊ – CONDOMÍNIO TERCEIRA IDADE

Piscina – Anteprojeto

Projetista - Raquel Mantovani





LISTA FERRO					PESO FERRO	
Nº	φmm	Quant.	Unit.	Total	Unit.	Total
N 1	φ - 6,3 mm	27	2,88m	76,87m	0,25 Kg/m	18,83 Kg
N 2	φ - 6,3 mm	27	1,67m	44,57m	0,25 Kg/m	10,92 Kg
N 3	φ - 6,3 mm	27	7,97m	214,47m	0,25 Kg/m	52,55 Kg
N 4	φ - 6,3 mm	27	7,97m	214,47m	0,25 Kg/m	52,55 Kg
N 5	φ - 8,0 mm	8	7,98m	63,84m	0,40 Kg/m	25,22 Kg
N 6	φ - 6,3 mm	25	7,92m	198,00m	0,25 Kg/m	48,51 Kg
N 7	φ - 6,3 mm	27	7,92m	213,02m	0,25 Kg/m	52,19 Kg
N 8	φ - 6,3 mm	27	7,92m	213,02m	0,25 Kg/m	52,19 Kg
N 9	φ - 6,3 mm	26	2,88m	74,30m	0,25 Kg/m	79,24 Kg
N 10	φ - 6,3 mm	26	1,58m	40,76m	0,25 Kg/m	79,24 Kg
N 11	φ - 6,3 mm	4	2,34m	10,45m	0,25 Kg/m	79,24 Kg
N 12	φ - 6,3 mm	4	2,16m	9,65m	0,25 Kg/m	79,24 Kg
N 13	φ - 6,3 mm	4	2,34m	10,45m	0,25 Kg/m	79,24 Kg
N 14	φ - 6,3 mm	4	2,16m	9,65m	0,25 Kg/m	79,24 Kg
N 15	φ - 6,3 mm	4	2,34m	10,45m	0,25 Kg/m	79,24 Kg
N 16	φ - 6,3 mm	4	2,16m	9,65m	0,25 Kg/m	79,24 Kg
N 17	φ - 6,3 mm	4	2,34m	10,45m	0,25 Kg/m	79,24 Kg
N 18	φ - 6,3 mm	4	2,16m	9,65m	0,25 Kg/m	79,24 Kg

QUANTIDADE FERRO	
φmm	PESO
φ - 6,3 mm	1.080,16 Kg
φ - 8,0 mm	25,22 Kg

QUANTIDADE CONCRETO		
FCK	DESCRIÇÃO	VOLUME
Fck - 25 MPa	FUNDO	6,55 m ³
	PAREDE -1	1,18 m ³
	PAREDE -2	1,58 m ³
	PAREDE -3	1,18 m ³
	PAREDE -4	1,18 m ³
VOLUME TOTAL CONCRETO -		11,66 m ³
VOLUME TOTAL CONCRETO -		12,82 m ³

QUANTIDADE DE FORMA	
DESCRIÇÃO	ÁREA
ÁREA FORMA	83,08 m ²
ÁREA FORMA+10%	91,39 m ²

□