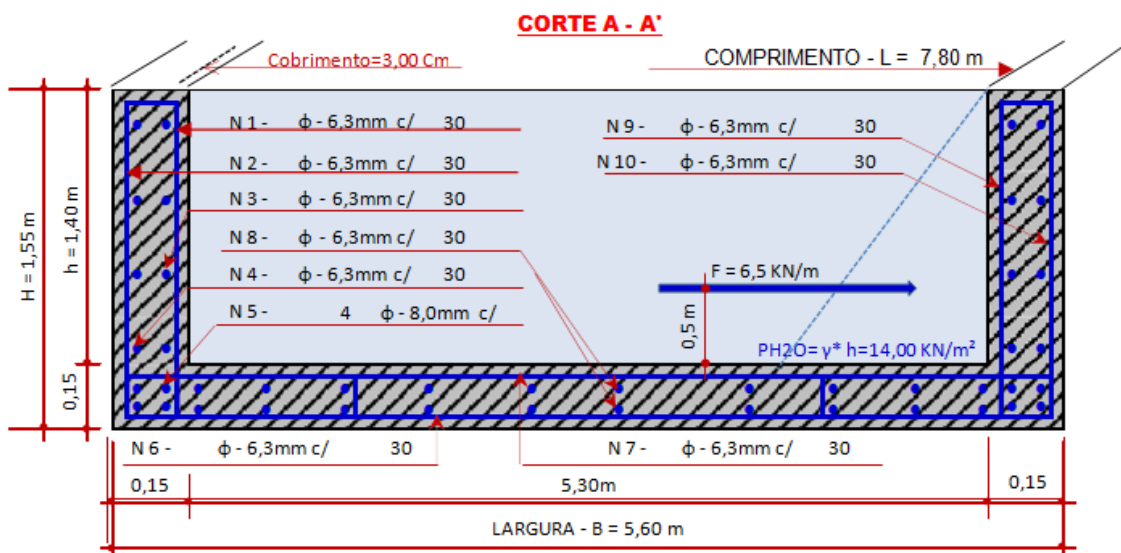
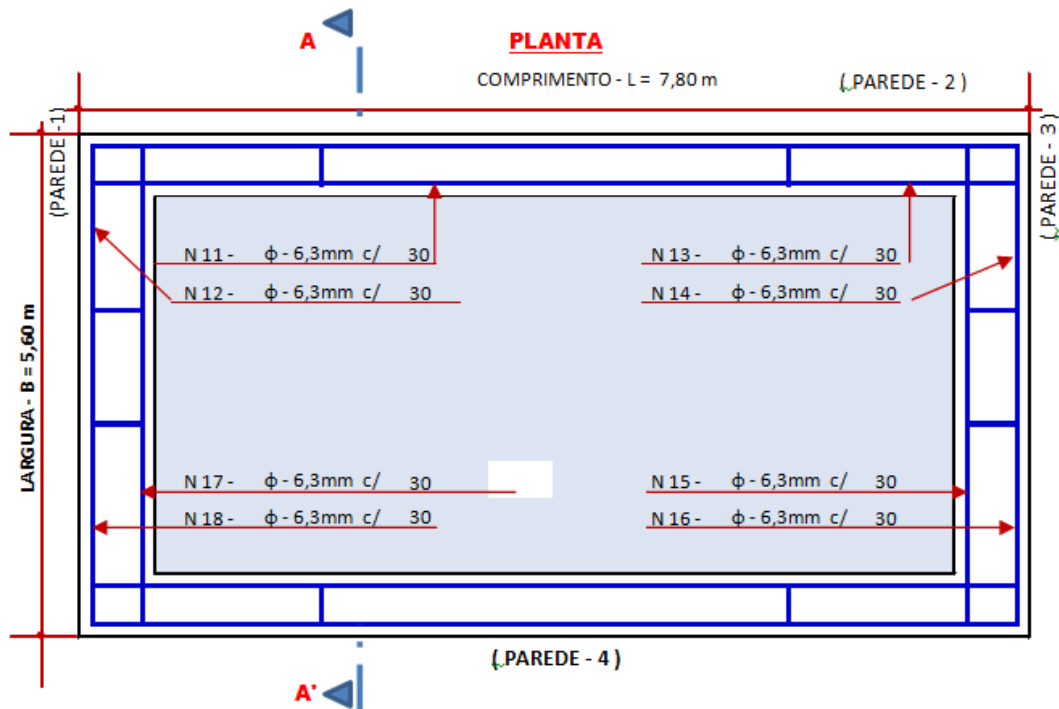
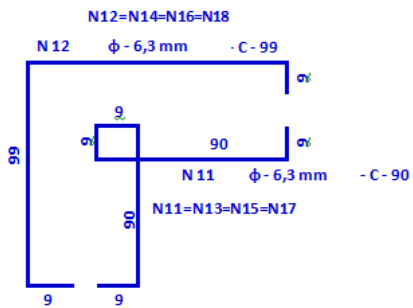
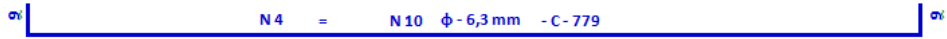
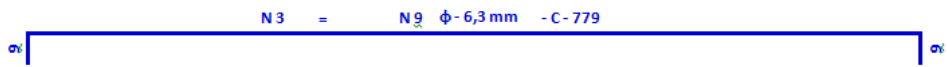
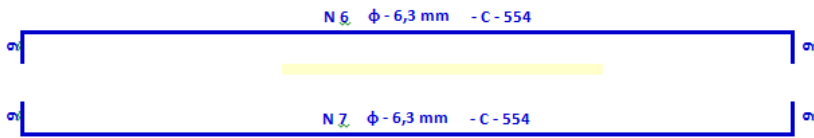
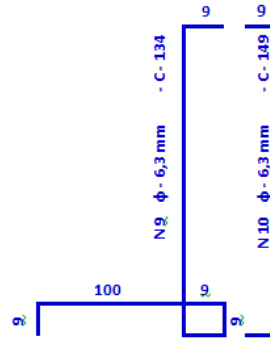
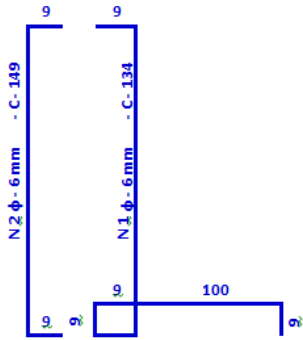


SÃO MIGUEL DO IGUAÇU-CONDOMÍNIO TERCEIRA IDADE

Piscina – Anteprojeto

Projetista - Raquel Mantovani





| LISTA FERRO | | | | | PESO FERRO | |
|-------------|------------|--------|-------|---------|------------|----------|
| Nº | φmm | Quant. | Unit. | Total | Unit. | Total |
| N 1 | φ - 6,3 mm | 27 | 2,88m | 76,87m | 0,25 Kg/m | 18,83 Kg |
| N 2 | φ - 6,3 mm | 27 | 1,67m | 44,57m | 0,25 Kg/m | 10,92 Kg |
| N 3 | φ - 6,3 mm | 27 | 7,97m | 214,47m | 0,25 Kg/m | 52,55 Kg |
| N 4 | φ - 6,3 mm | 27 | 7,97m | 214,47m | 0,25 Kg/m | 52,55 Kg |
| N 5 | φ - 8,0 mm | 8 | 7,98m | 63,84m | 0,40 Kg/m | 25,22 Kg |
| N 6 | φ - 6,3 mm | 25 | 7,92m | 198,00m | 0,25 Kg/m | 48,51 Kg |
| N 7 | φ - 6,3 mm | 27 | 7,92m | 213,02m | 0,25 Kg/m | 52,19 Kg |
| N 8 | φ - 6,3 mm | 27 | 7,92m | 213,02m | 0,25 Kg/m | 52,19 Kg |
| N 9 | φ - 6,3 mm | 26 | 2,88m | 74,30m | 0,25 Kg/m | 79,24 Kg |
| N 10 | φ - 6,3 mm | 26 | 1,58m | 40,76m | 0,25 Kg/m | 79,24 Kg |
| N 11 | φ - 6,3 mm | 4 | 2,34m | 10,45m | 0,25 Kg/m | 79,24 Kg |
| N 12 | φ - 6,3 mm | 4 | 2,16m | 9,65m | 0,25 Kg/m | 79,24 Kg |
| N 13 | φ - 6,3 mm | 4 | 2,34m | 10,45m | 0,25 Kg/m | 79,24 Kg |
| N 14 | φ - 6,3 mm | 4 | 2,16m | 9,65m | 0,25 Kg/m | 79,24 Kg |
| N 15 | φ - 6,3 mm | 4 | 2,34m | 10,45m | 0,25 Kg/m | 79,24 Kg |
| N 16 | φ - 6,3 mm | 4 | 2,16m | 9,65m | 0,25 Kg/m | 79,24 Kg |
| N 17 | φ - 6,3 mm | 4 | 2,34m | 10,45m | 0,25 Kg/m | 79,24 Kg |
| N 18 | φ - 6,3 mm | 4 | 2,16m | 9,65m | 0,25 Kg/m | 79,24 Kg |

| QUANTIDADE FERRO | |
|------------------|-------------|
| φmm | PESO |
| φ - 6,3 mm | 1.080,16 Kg |
| φ - 8,0 mm | 25,22 Kg |

| QUANTIDADE CONCRETO | | |
|-------------------------|-----------|----------|
| FCK | DESCRIÇÃO | VOLUME |
| Fck - 25 MPa | FUNDO | 6,55 m³ |
| | PAREDE -1 | 1,18 m³ |
| | PAREDE -2 | 1,58 m³ |
| | PAREDE -3 | 1,18 m³ |
| | PAREDE -4 | 1,18 m³ |
| VOLUME TOTAL CONCRETO - | | 11,66 m³ |
| VOLUME TOTAL CONCRETO - | | 12,82 m³ |

| QUANTIDADE DE FORMA | |
|---------------------|----------|
| DESCRIÇÃO | ÁREA |
| ÁREA FORMA | 83,08 m² |
| ÁREA FORMA+10% | 91,39 m² |

□