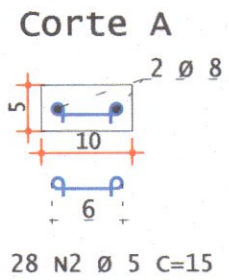
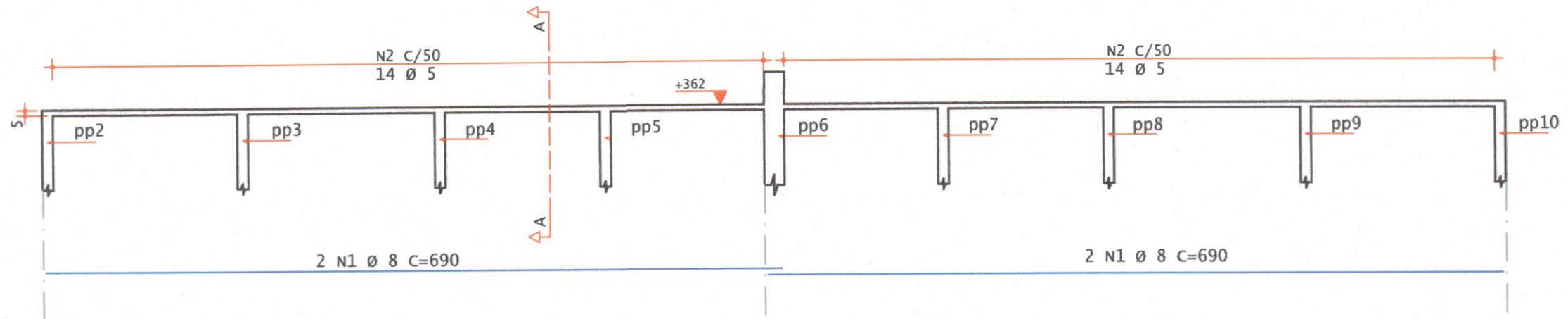
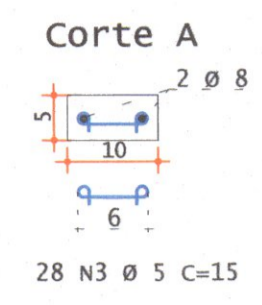
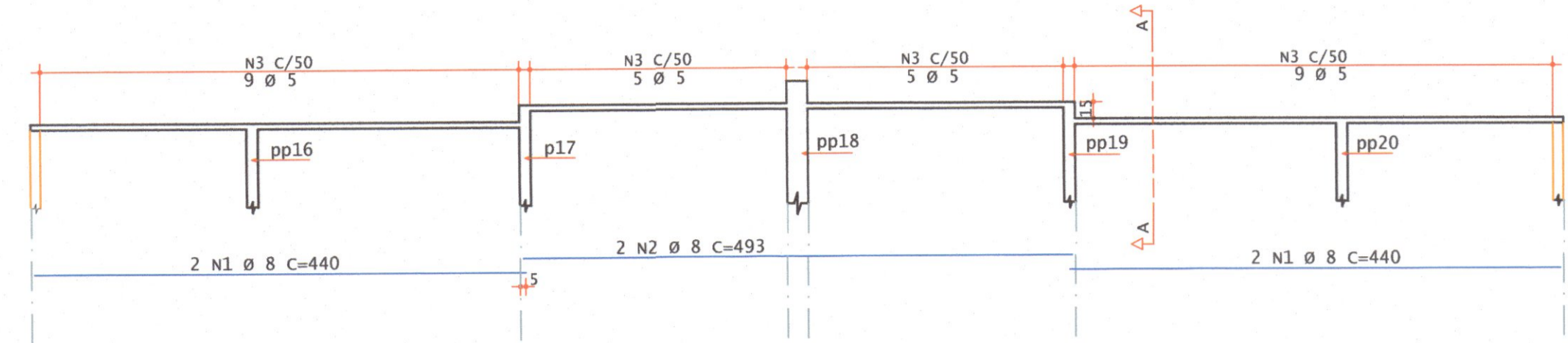


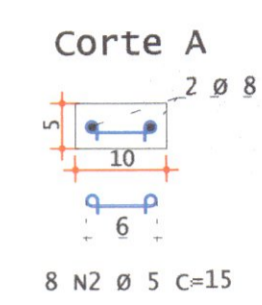
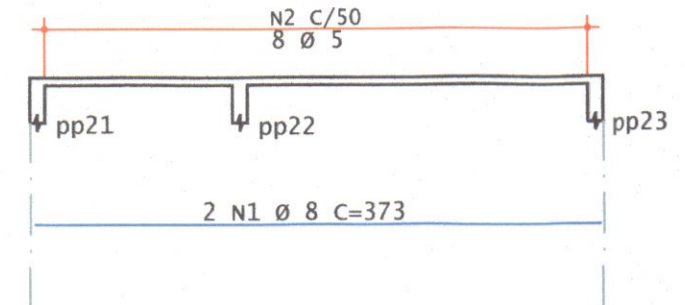
CINTA CORRIDA 1
10x5



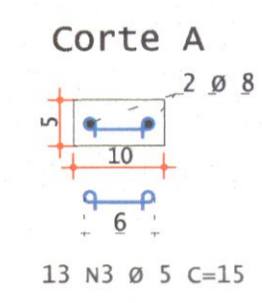
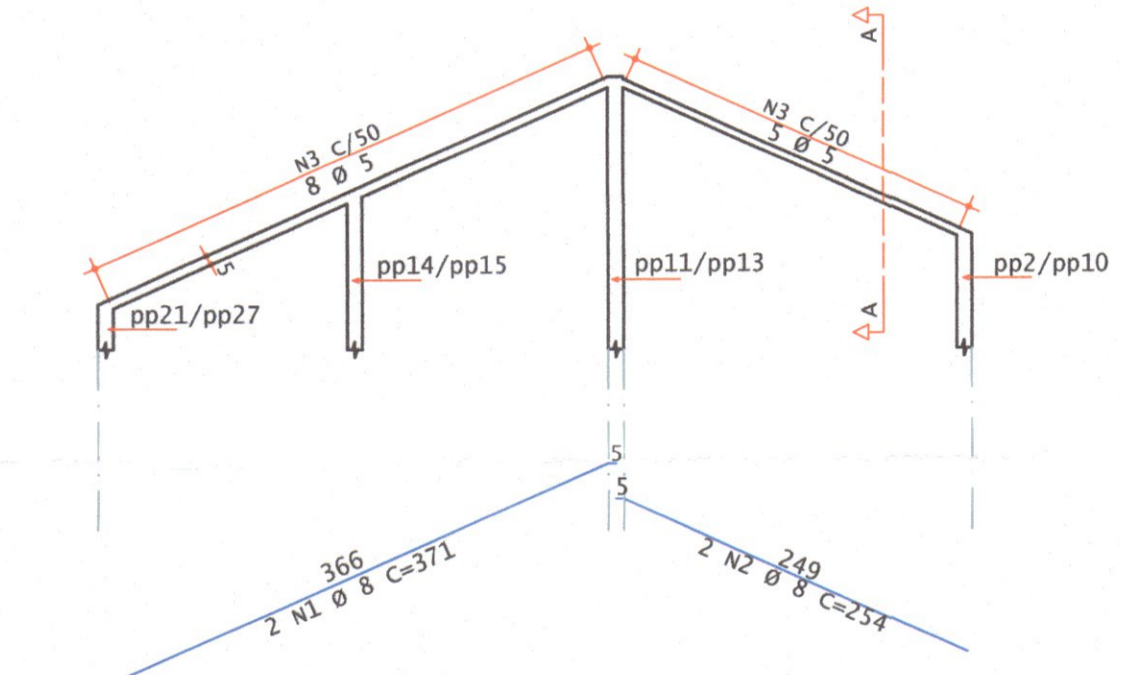
CINTA CORRIDA 2
10x5



CINTA CORRIDA 3
10x5



CINTA CORRIDA 4 / CINTA CORRIDA 6
10x5



CINTA CORRIDA 5
19x5

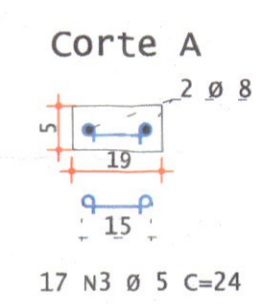
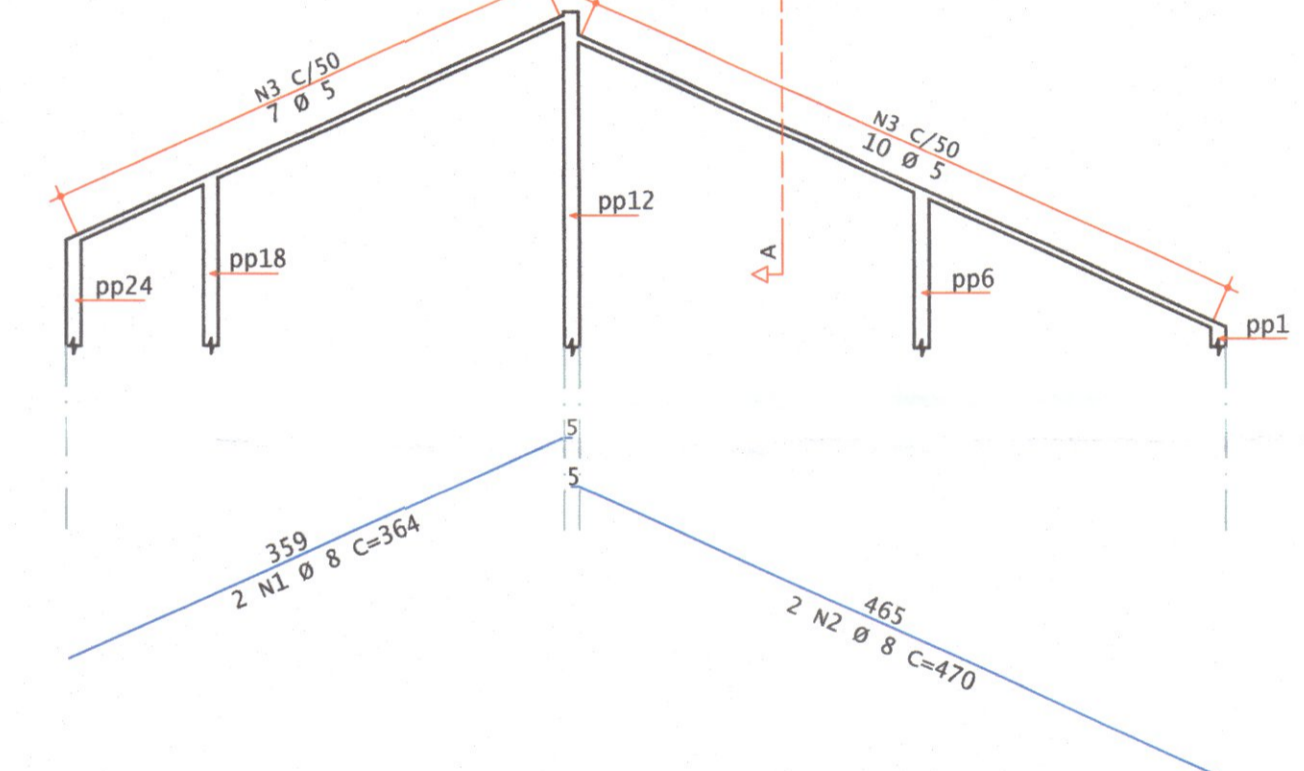


TABELA DE AÇO DAS CINTAS

AÇO	POS	BIT (mm)	QUANT	COMPRIMENTO (cm)	TOTAL (cm)
CINTA CORRIDA 1	50A	1	8	4	690
	60A	2	5	28	15
CINTA CORRIDA 2	50A	1	8	4	440
	50A	2	8	2	493
	60A	3	5	28	15
CINTA CORRIDA 3	50A	1	8	2	373
	60A	2	5	8	15
CINTA CORRIDA 4 E CINTA CORRIDA 6	50A	1	8	2	371
	50A	2	8	2	254
	60A	3	5	13	15
CINTA CORRIDA 5	50A	1	8	2	364
	50A	2	8	2	470
	60A	3	5	17	24

RESUMO DE AÇO

AÇO	BIT (mm)	COMPR (m)	PESO (kg)
60A	5	19,70	3,15
50A	8	108,4	43,4
Peso Total 60A =			3,15 kg
Peso Total 50A =			43,4 kg

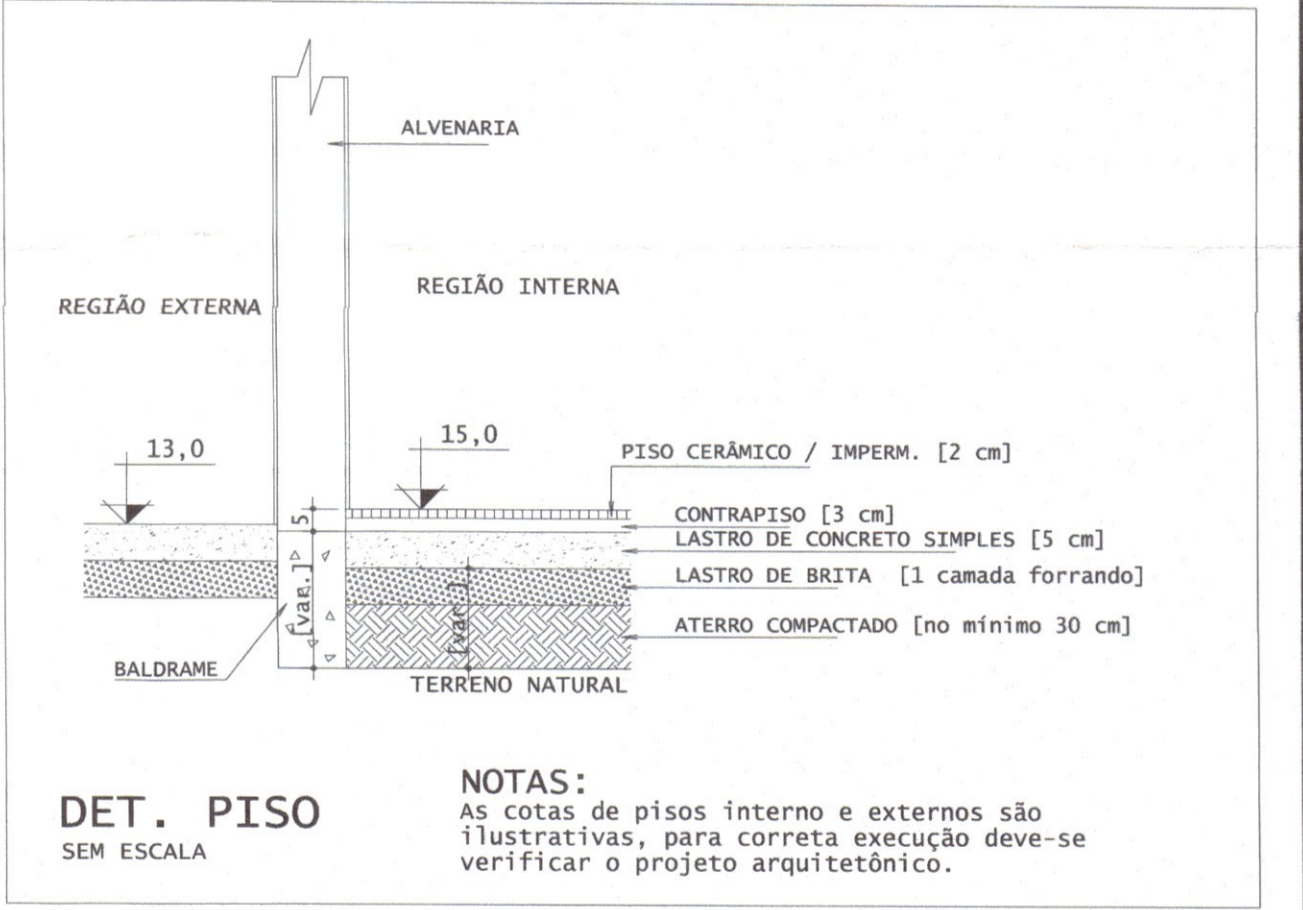
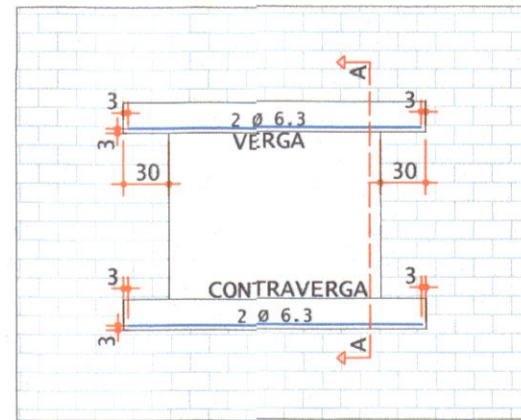


TABELA DE AÇO DOS PILARETES

AÇO	POS	BIT (mm)	QUANT	COMPRIMENTO (cm)	TOTAL (cm)
pp2=pp3=pp4=pp5=pp7=pp8=pp9=pp10					
50A	1	8	32	102	3.264
60A	2	5	32	32	1.024
pp6					
50A	1	8	4	132	528
60A	2	5	5	50	250
pp16=pp20					
50A	1	8	8	102	816
60A	2	5	10	32	320
pp17=pp19					
50A	1	8	8	117	936
60A	2	5	10	32	320
pp21=pp22=pp23=pp27					
50A	1	8	16	57	912
60A	2	5	8	32	256
pp14=pp15					
50A	1	8	8	127	1.016
60A	2	5	10	32	320
pp11=pp13					
50A	1	8	18	207	1.656
60A	2	5	18	32	576
pp2=pp10					
50A	1	8	8	102	816
60A	2	5	8	32	256
pp24					
50A	1	8	4	96	384
60A	2	5	4	50	200
pp18					
50A	1	8	4	137	548
60A	2	5	6	50	300
pp12					
50A	1	8	4	247	988
60A	2	5	11	50	550
pp1					
50A	1	8	4	40	160
60A	2	5	1	50	50



RESUMO DE AÇO

AÇO	BIT (mm)	COMPR (m)	PESO (kg)
60A	5	43,60	7
50A	8	120,2	48,1
Peso Total 60A =			7 kg
Peso Total 50A =			48,1 kg

NOTAS
A DOBRA "PATINHA" NA ARMADURA LONGITUDINAL DO PILARETE DEVE SER FEITA P/ DENTRO DA SEÇÃO DO MESMO PARA GARANTIR O COBRIMENTO.

<p>pp2=pp3=pp4=pp5 pp7=pp8=pp9=pp10</p> <p>10x10</p> <p>S/ ESCALA</p>	<p>pp6</p> <p>19x10</p> <p>S/ ESCALA</p>	<p>pp16=pp20</p> <p>10x10</p> <p>S/ ESCALA</p>	<p>pp17=pp19</p> <p>10x10</p> <p>S/ ESCALA</p>
<p>pp21=pp22=pp23 pp25=pp26=pp27</p> <p>10x10</p> <p>S/ ESCALA</p>	<p>pp14=pp15</p> <p>10x10</p> <p>S/ ESCALA</p>	<p>pp11=pp13</p> <p>10x10</p> <p>S/ ESCALA</p>	<p>pp2=pp10</p> <p>10x10</p> <p>S/ ESCALA</p>
<p>pp24</p> <p>10x10</p> <p>S/ ESCALA</p>	<p>pp18</p> <p>10x10</p> <p>S/ ESCALA</p>	<p>pp12</p> <p>10x10</p> <p>S/ ESCALA</p>	<p>pp1</p> <p>10x10</p> <p>S/ ESCALA</p>

REVISÃO

REV	DATA	DESCRIÇÃO	EMISSOR
R00	11/07/2020	EMISSÃO INICIAL	NETO LEÃO
R01	22/10/2020	REVISÃO GERAL I	NETO LEÃO
R02	04/01/2021	REVISÃO GERAL II	NETO LEÃO

ARQUIVO DIGITAL: TER_TLB_40TI_EST_PB_P07_R02

USO EXCLUSIVO DA PREFEITURA: Prefeitura Municipal de Telêmaco Borba

CONSULTA PRÉVIA
Projeto Analisado em 11/08/2020
Isabelle Adamoviski
Engenheira Civil
CREA-PR: 78.757/D

Comissão de Urbanismo da Prefeitura Municipal de Telêmaco Borba - COMUR
DECRETO Nº:
Projeto: () APROVADO
() REPROVADO
Em reunião realizada dia 11/08/2020

OBRA:
RESIDENCIAL TELÊMACO BORBA II
10ª ETAPA - 3ª FASE
Empreendimento Habitacional

PRANCHA Nº: **07 / 07**

PROPRIETÁRIO: PREFEITURA MUNICIPAL DE TELÊMACO BORBA - PR
RESP. PROJETO: PAULO BACILCA CAU 15164-5
RESP. TÉCNICO: PAULO BACILCA CAU 15164-5

DESENVOLVIMENTO PROJ.: NETO LEÃO
DETALHAMENTO PROJ.: NETO LEÃO

ASSUNTO: PROJ. ESTRUTURAL - BÁSICO
ESCALA: 1:50

CONTEÚDO:
MTB 40 TI
ARMAÇÃO DAS CINTAS, ARMAÇÃO DE PILARETES E DETALHE DE VERGA E CONTRAVERGA.()

TERCASA
CONSTRUTORA

R. Delfina Braga Vilemonti, 3661.
Orleans - Curitiba PR.
CEP: 81210-450
Tel: (041) 9 9693-0396