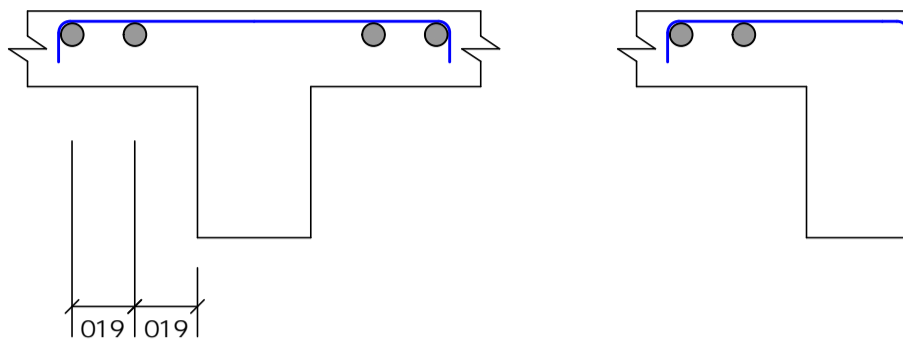
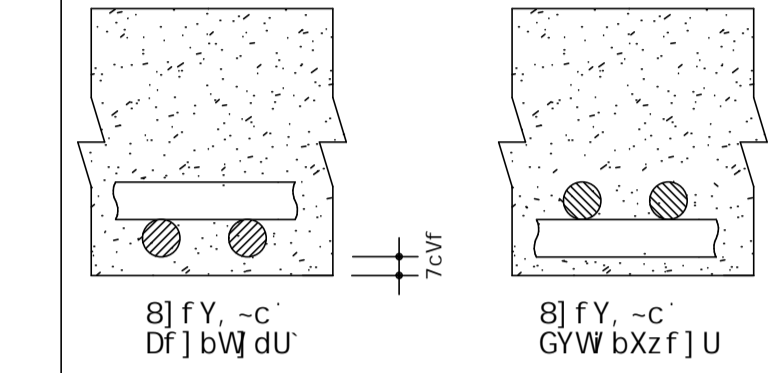


5FA58I F5 B9; 5H=J5
9G7' %) \$

89H5@<9' H&D=7C 89 : 9FFCG
89' B=GHF=6I =uEC' 89
5FA58I F5 B9; 5H=J5



8YhU' \Y' [Yb/f] Vc' Xc' U' c^UaYbhc
XY' UfaUXi f Ug' dcg] h] j] Ug

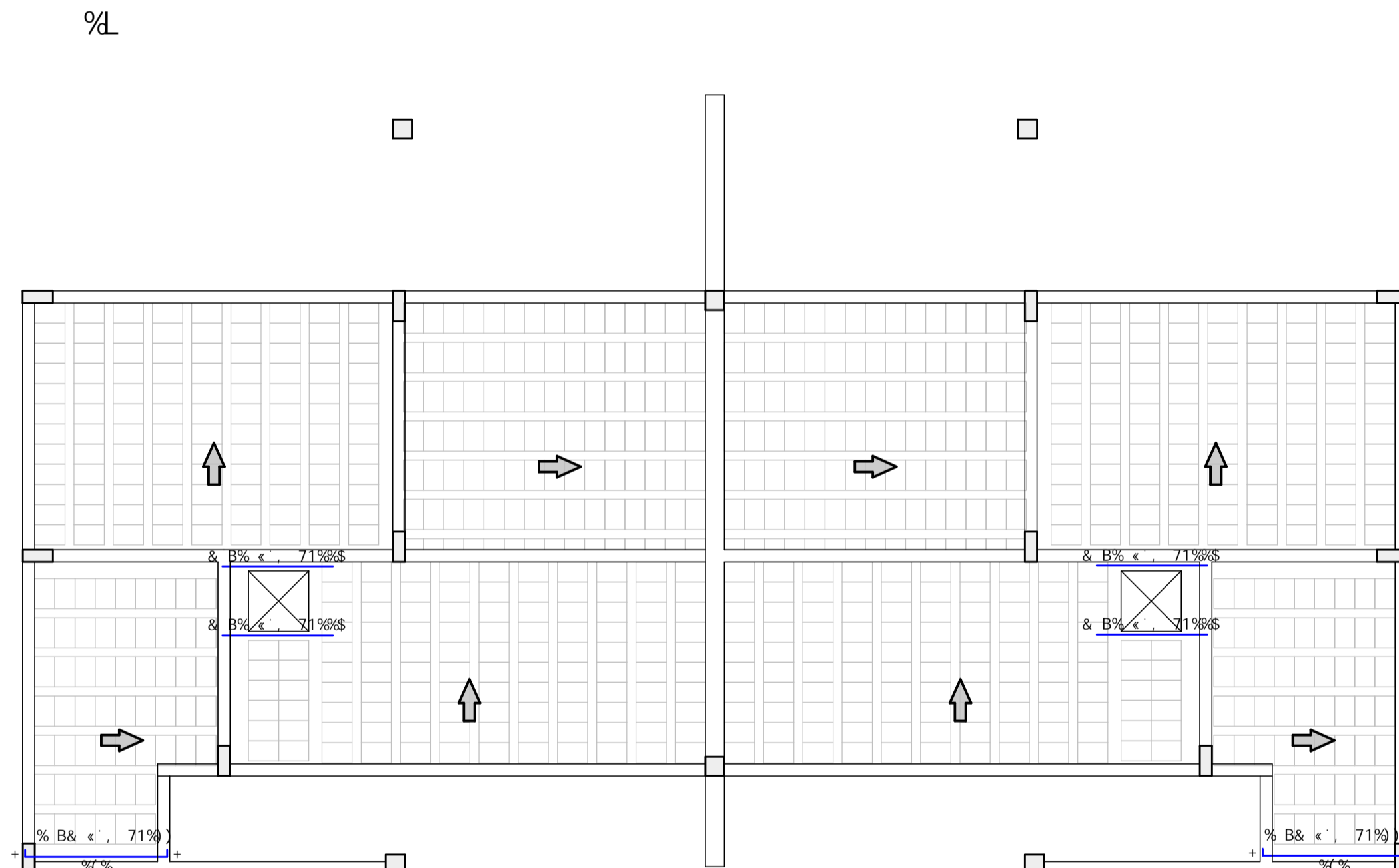


JH%5 @ - 1 b] XUXYg & 2) \$ a		JH(5 @ - 1 b] XUXYg & 2) \$ a	
JH&5 @ - 1 b] XUXYg % 2 \$ a		JH' 5 @ - 1 b] XUXYg % 2 - a	
JH* 5 @ % 1 b] XUXYg % 2 \$ a		JH+5 @ % 1 b] XUXYg & 2, + a	
JH) 5 @ - 1 b] XUXYg - 2 - \$ a		JH, 5 @ - 1 b] XUXYg - 2 - \$ a	
JH) 6 @ - 1 b] XUXYg (2 % a		JH, 6 @ - 1 b] XUXYg (2 % a	

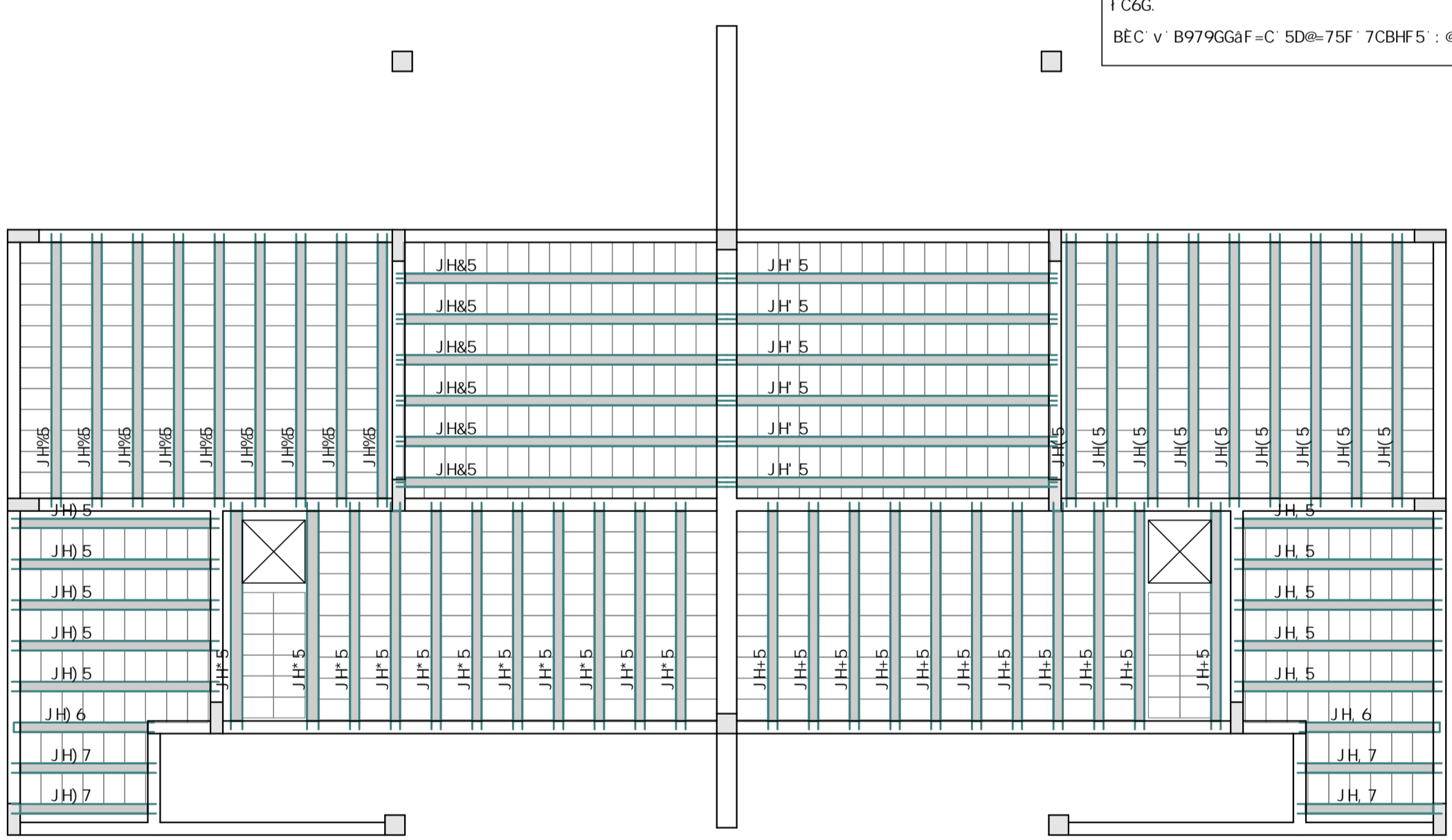
5uC	DCG	6=H flaat	EI 5BH	7CADF=A9BHC 1 B=H HCH5@ flvat
\$5	\$5	%	%	%
\$5	\$5	%	%	%

F9GI AC' 89' 5uC			
5uC	6=H flaat	7CADF flaat	D9GC flaat
\$5	\$5	%	%
DYgc' HcHU') \$ 1			

DFC>" : 56F=75uEC' 89' J =; CH5G' HF 9@=u585G
G# 9G75@5



5FA58I F5 DCG=H=J5
9G7' %) \$



DCG=7=CB5A9BHC' 85G' J =; CH5G
9G7' %) \$

I C6G
BEC v B979GGaF=C 5D@=75F 7CBHF5 : @97<5'

H569@5' 89' @5>9G							
@5>9	H=DC	5@H F5 V@	9@9J 5uEC V@	DD hZ#a&	D9FA hZ#a&	57-B hZ#a&	HCH hZ#a&
@	HF 9@=u585	%&1, 2(Z&, +	S' %	S' %	S' %	S' %
@	HF 9@=u585	%&1, 2(Z&, +	S' %	S' %	S' %	S' %
@	HF 9@=u585	%&1, 2(Z&, +	S' %	S' %	S' %	S' %
@	HF 9@=u585	%&1, 2(Z&, +	S' %	S' %	S' %	S' %
@	HF 9@=u585	%&1, 2(Z&, +	S' %	S' %	S' %	S' %
@	HF 9@=u585	%&1, 2(Z&, +	S' %	S' %	S' %	S' %
@	HF 9@=u585	%&1, 2(Z&, +	S' %	S' %	S' %	S' %

F9@5uEC' 89' @5>CH5G' D# @5>9G			
@9, 9B85	EI 5BH'	@5F: "	7CAD'
	flvat	flvat	flvat
5	6	7	7
5	6	7	7

A5@<5' 89' 5uC' 85G' @5>9G			
D5J=A9BHC	5uC	6=H@5 flaat	5' HCH5@ flaat
7C69FH F5	75I' \$	(* &	* \$2 \$
A5@<5' 89' 5uC' E- & 75I' \$ * (* &aa' 7#% W@ 9A HC85G 5G @5>9G			

F9J =GEC			
F9J	85H5	89G7F=uEC	9A=GGCF
F\$ \$	\$ (#) #&&&&	9A=GGC =B=7=5@	B9HC @9EC
F\$ %	% (#) #&&&&	F9J=GC : 9F5@ =	B9HC @9EC
F\$ %2	% (#) #&&&&	F9J=GC : 9F5@ =Z	B9HC @9EC

5FEI -J C' B- =H5@ H9F5=F5S(\$H=S9GHSd6SDS* \$F\$%Z
I GC' 9L7@ G=J C' 85' DF 9' 9=H F5.

C6F5 H9F 79=F5' =8589' F9G=89B7=5@ 7C<5D5F' =F5H= ' == ' ! && ' 9H5D5 9K5@8C' 7CF89=FC	7CBH9I 8C. E 9GH
DFCDE=9@F=C DF 9' 9=H F5' AI B=7=D5@ 89' =F5H= 1' DF	DF5B7<5 B..
F9Gd' DFC=9HC	\$* #\$+
D5I @C' 657=@@5' 75I' % % (1)	
F9Gd' H7B=7C	
D5I @C' 657=@@5' 75I' % % (1)	
B9C@9EC	TERCASA CONSTRUTORA
5GGI BHC DFC>' 9GHF H F5@' 1' 6aG=7C	9G75@5 (%) \$
7CBH9I 8C. AD= ' (\$' H= 5FA5uEC' 85G' @5>9G2' DFC>' 89' : 56F=75uEC' 85G' J =; CH5G 9' F9@5uEC' 89' @5>CH5G	