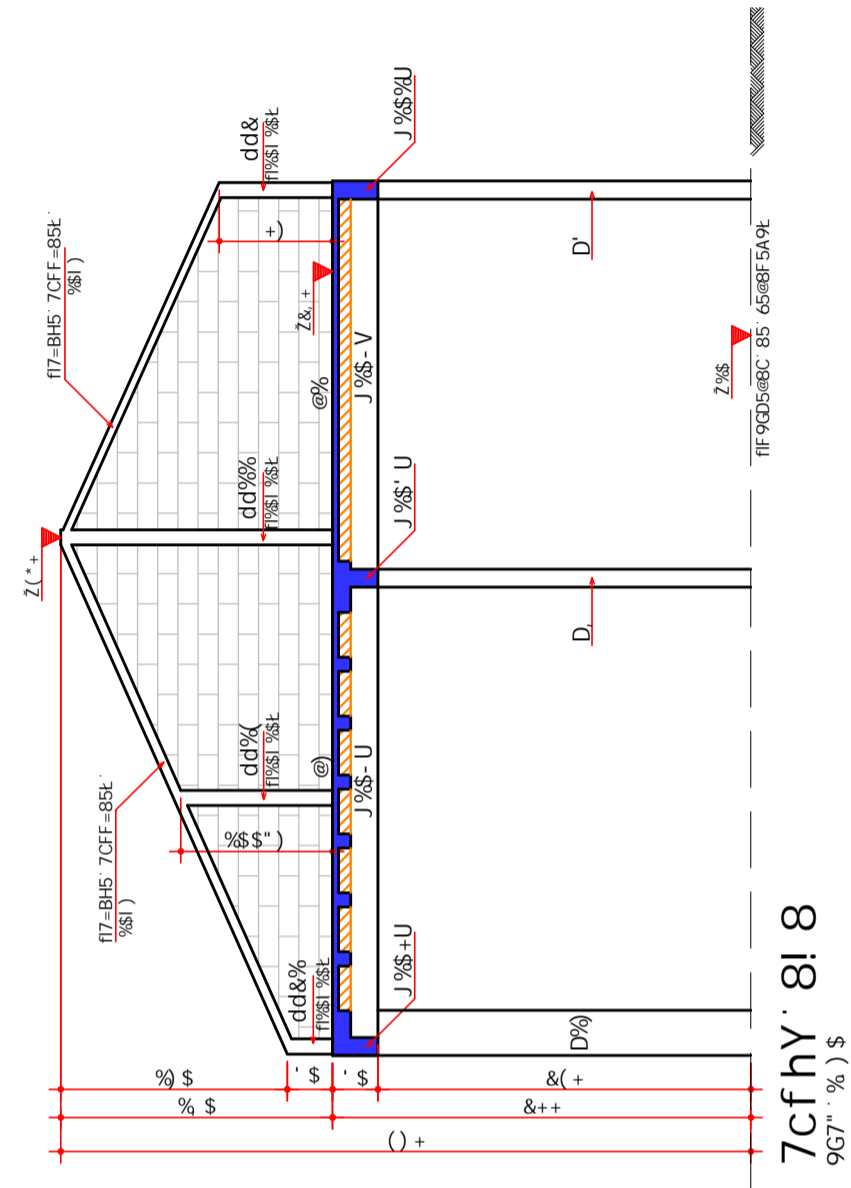
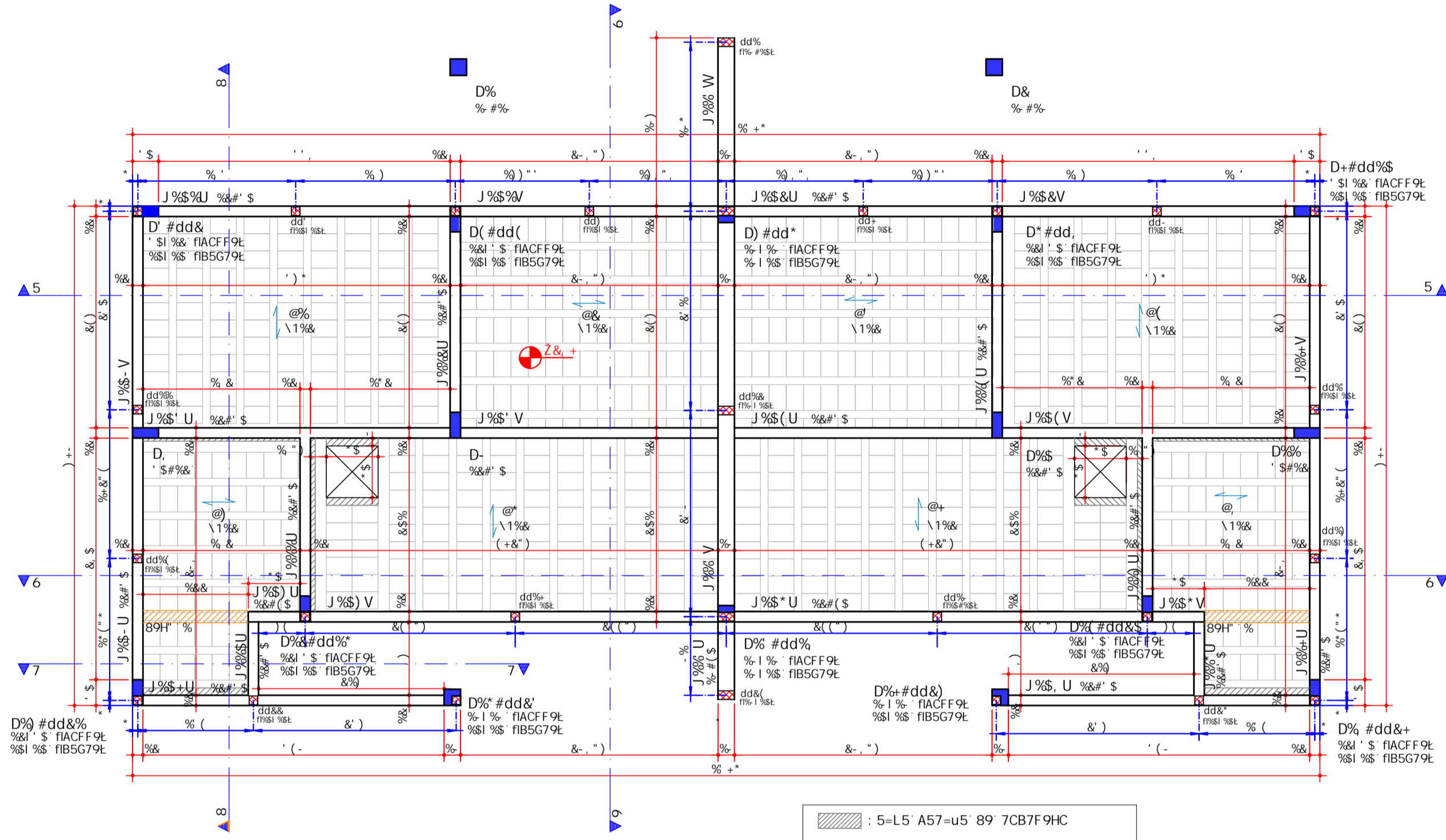


7cfhy 5! 5
9G7' %) \$

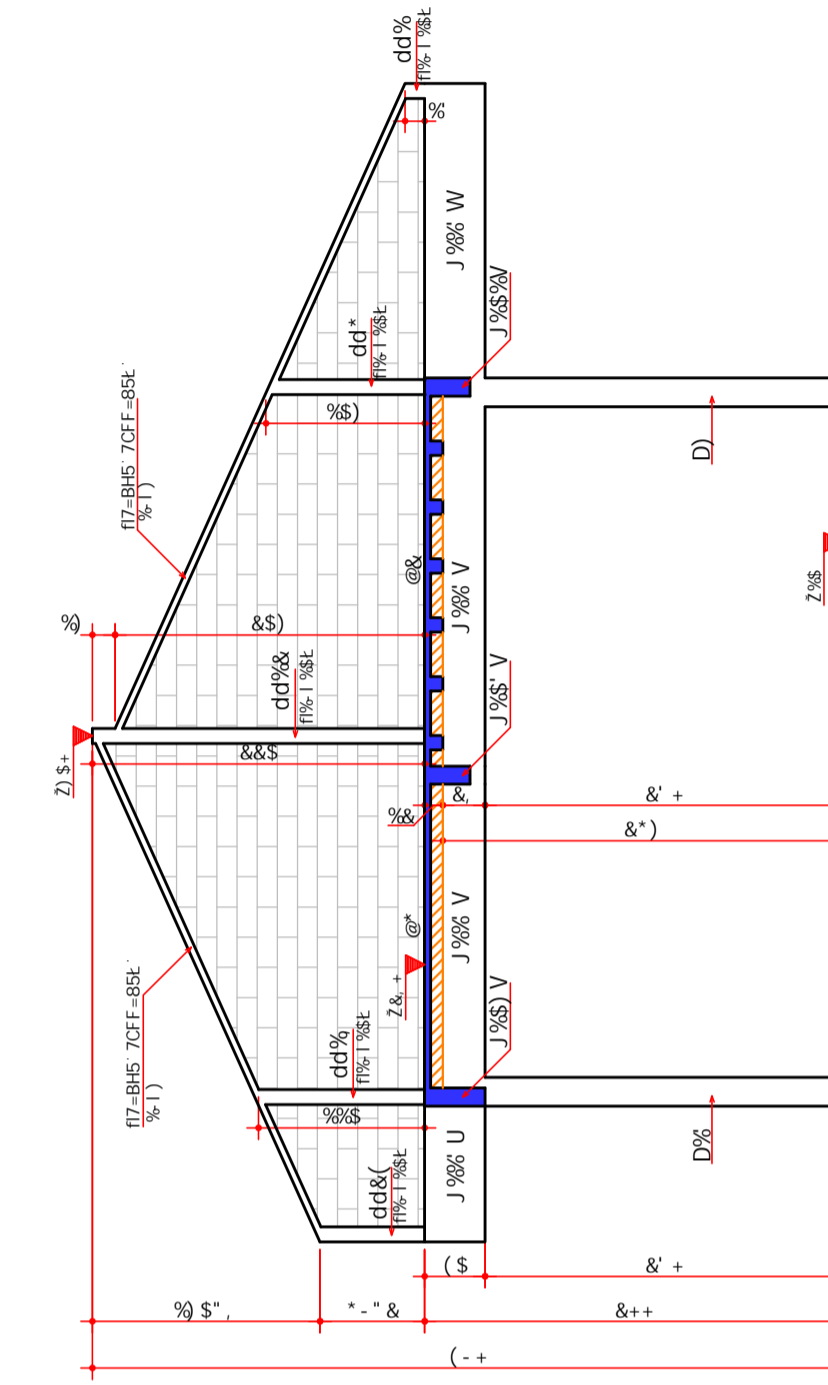


7cfhy 8! 8
9G7' %) \$

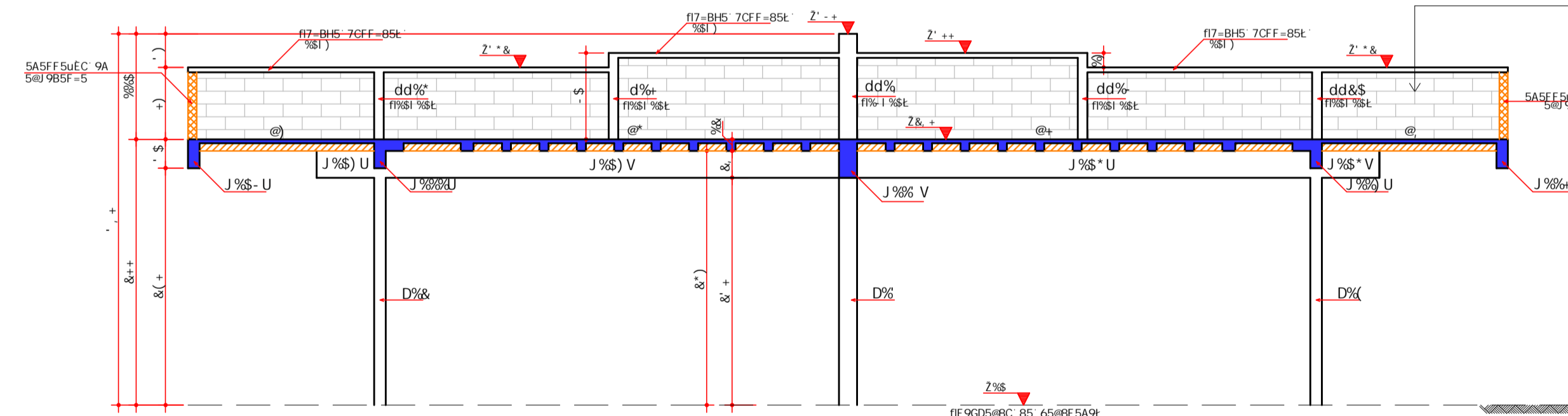


: CFA5G' 85' 7C69FH F5
9G7' %) \$

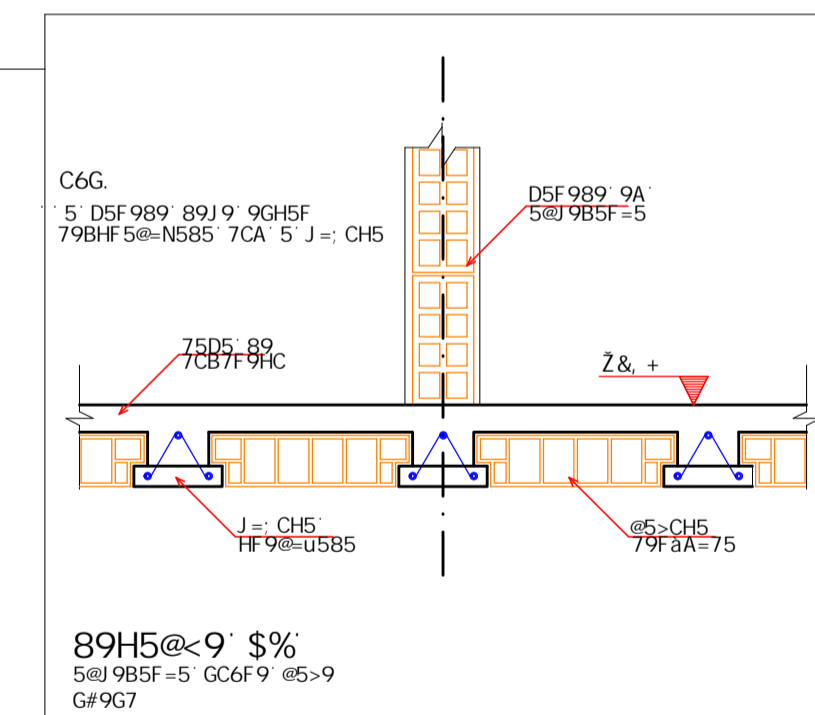
5-L5 A57-u5 89 7CB7F9HC
5@U 9B5F-5 GC6F-9 @5>9



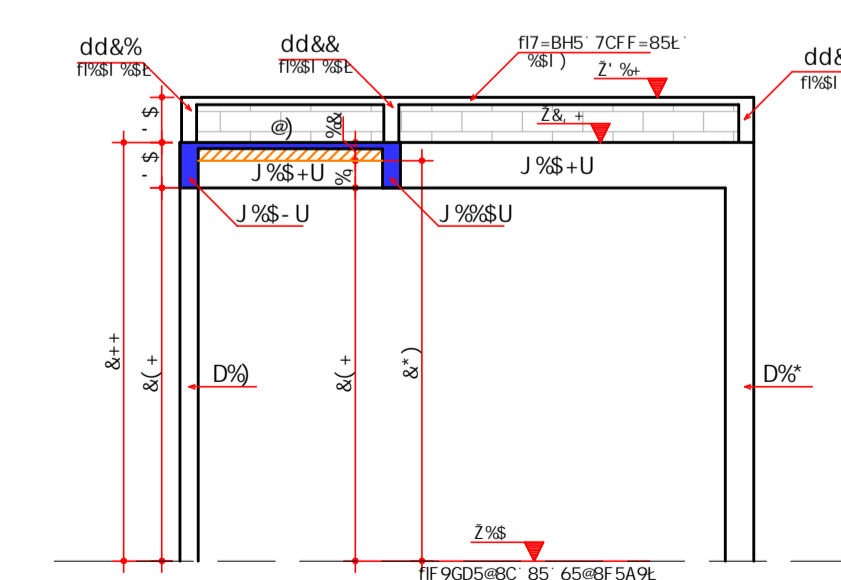
7cfhy 9! 9
9G7' %) \$



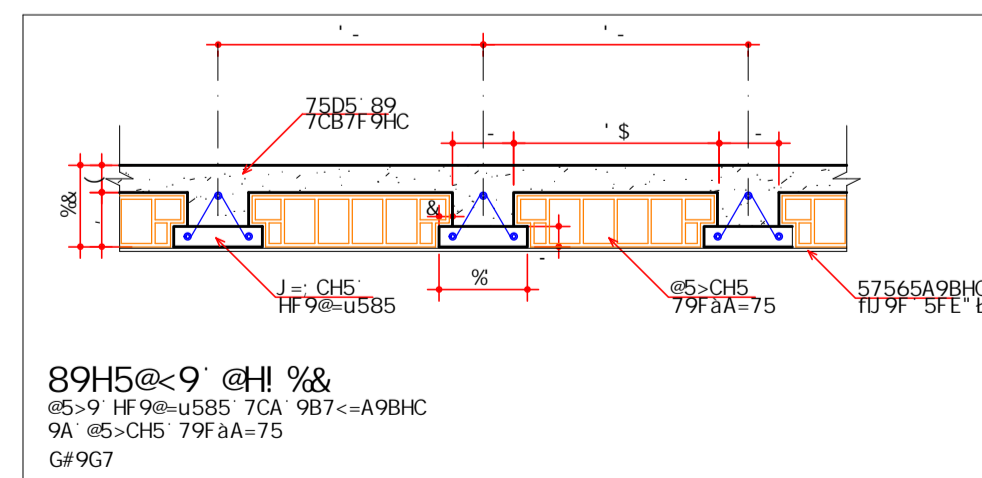
7cfhy 6! 6
9G7' %) \$



89H5@<9' \$%
5@U 9B5F-5 GC6F-9 @5>9
Gf9G7



7cfhy 7! 7
9G7' %) \$



89H5@<9' @H! %&
85-9 HF 9@U5B5 7CA 9B7- A9BHC
9A @5-CH5 79FA-75
Gf9G7

7C9J 9BuËC' 89' D=@5F 9G

B5G79 7CBH=BI 5 ACCF9 AI 85

F9J =GËC

F9J	85H5	89G7F=uËC	9A=GGCF
F\$S	\$(#) #88&S	9A=GCËC =B=7=5@	B9HC @9EC
F\$%	%(#\$) #88&S	F9J=GCËC : 9F5@ =	B9HC @9EC
F\$%2	& #98#88&S	F9J=GCËC : 9F5@ =Z	B9HC @9EC

5FEI-JC B- =H5@ H9FS=F5S(\$H=59GHSD6SD&S\$%Z
I GC 9L7@ G-JC 85' DF 9 9=H F5.

C6F5:
H9F79=F5' =8589' F9G=89B7=5@
7C<5D5F' =F5H= = ! ' && ' 9H5D5
9K5@8C' 7CF89=FC

7CBH9I 8C:
E
9GH

DFCFC=9@F-C
DF 9 9=H F5' AI B=7=D5@ 89' =F5H= 1' DF

F9G7' DFC-9HC
D5I @C' 657=@85' 75I' % % (1)

F9G7' H7B-7C
D5I @C' 657=@85' 75I' % % (1)

B9G9B1 C@U =A9BHC DFC-*	B9H5@<5A9BHC DFC-*
B9HC @9EC	B9HC @9EC

5GGI BHC 9G75@6,
DFC- * 9GH F H F5 @ 1' 6@G=7C %) \$

7CBH9I 8C:
AD= ('\$' H=

: CFA5G' 85' 7C69FH F5' 7CFH9G' 89H5@<9' 9' @9 9B85G

TERCASA
CONSTRUTORA